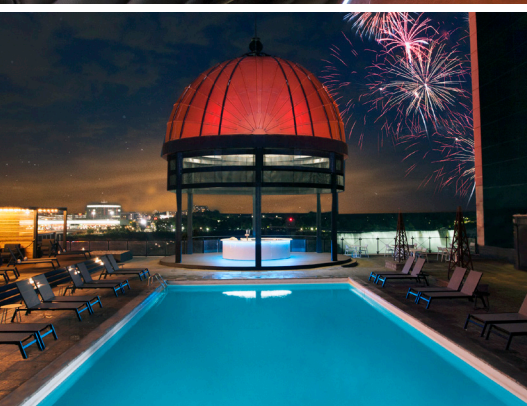


MEETINGS & EVENTS



NIAGARAMEETINGS.COM

& EVENTS MEETINGS

FIRST CLASS FALLSVIEW HOTELS



INSPIRED EVENTS AT CANADIAN NIAGARA HOTELS

Make your next meeting or conference a remarkable experience. With four extraordinary hotels that are the closest to Niagara Falls and the Convention Centre, Canadian Niagara Hotels offers a notable array of premier accommodations. Elevate your event at Sheraton Fallsview, Marriott on the Falls, Marriott Fallsview Hotel & Spa, and The Brock Niagara Falls — Fallsview, Tapestry Collection by Hilton. These venues not only provide exceptional guestrooms and meeting facilities but also a diverse range of entertainment and dining options.

When it comes to creating unforgettable moments for meetings and conferences, Canadian Niagara Hotels stands as a definitive choice. Distinctive team-building venues, exceptional facilities, and the impeccable service and support delivered by a dedicated Sales and Conference Team sets your event apart. The collective power of Canadian Niagara Hotels provides unparalleled opportunities for hotel meeting and event spaces within Niagara Falls.

Our impressive portfolio boasts 200,000 square feet of event space, highlighted by 50 versatile meeting rooms that include Fallsview and naturally lit spaces. Additionally, our 2,000 guestrooms and suites at 4 of the finest hotels in Niagara, and 6 unrivaled venues add an extra touch of uniqueness to your gathering.

Canadian Niagara Hotels, your one stop meeting experience!

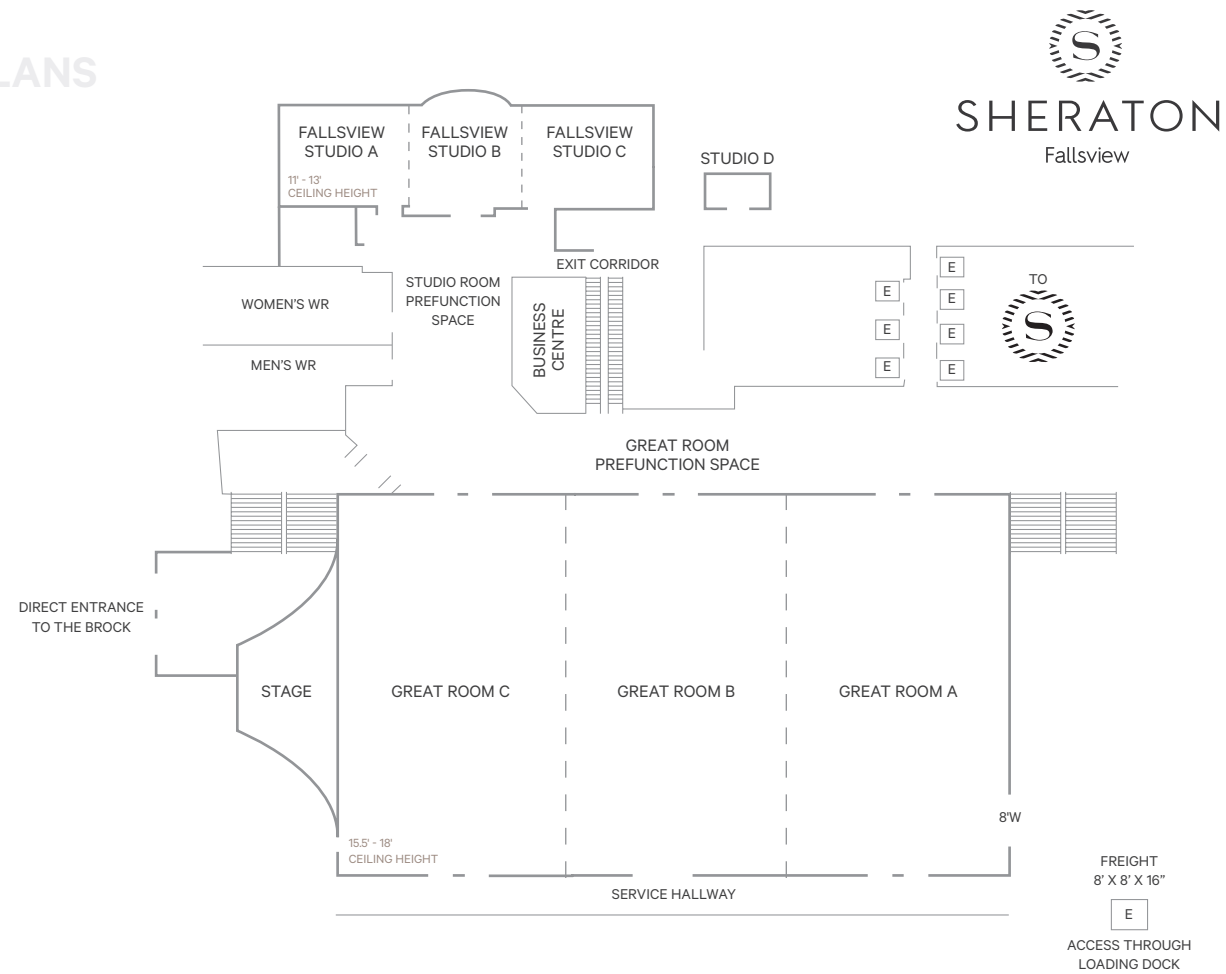
Sheraton Fallsview is an award-winning experience where business and leisure blend effortlessly.

Part of Falls Avenue Resort, the Sheraton offers a diverse selection of unique special event and team building venues, exceptional cuisine, and lively attractions. The only hotel located directly across from Niagara Falls, offering everything you expect in a 4 Diamond property with state-of-the-art meeting space and first-class accommodations.

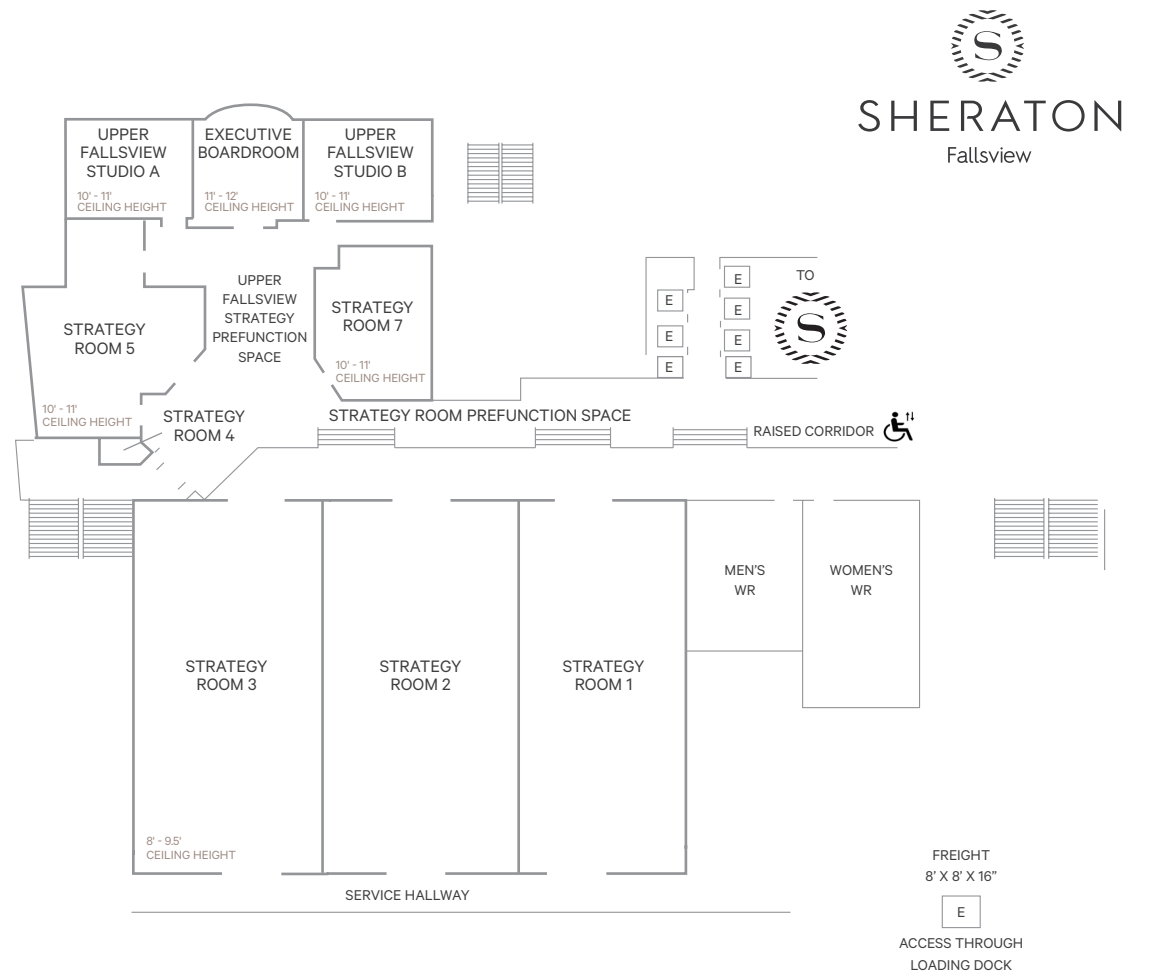
- The only hotel located directly across from Niagara Falls
- 669 guestrooms and suites
- 35,000 sq. ft. flexible function space including Fallsview and natural lighting
- 15,000 sq. ft. Great Room with built-in stage and green room
- 17 flexible function rooms, including Fallsview space and natural lighting
- Christienne Fallsview Spa
- Massimo's Italian Fallsview Restaurant
- Fallsview Grand Buffet
- Fallsview Rooftop Pool & Bar
- Club Lounge
- Lobby Bar



3RD LEVEL



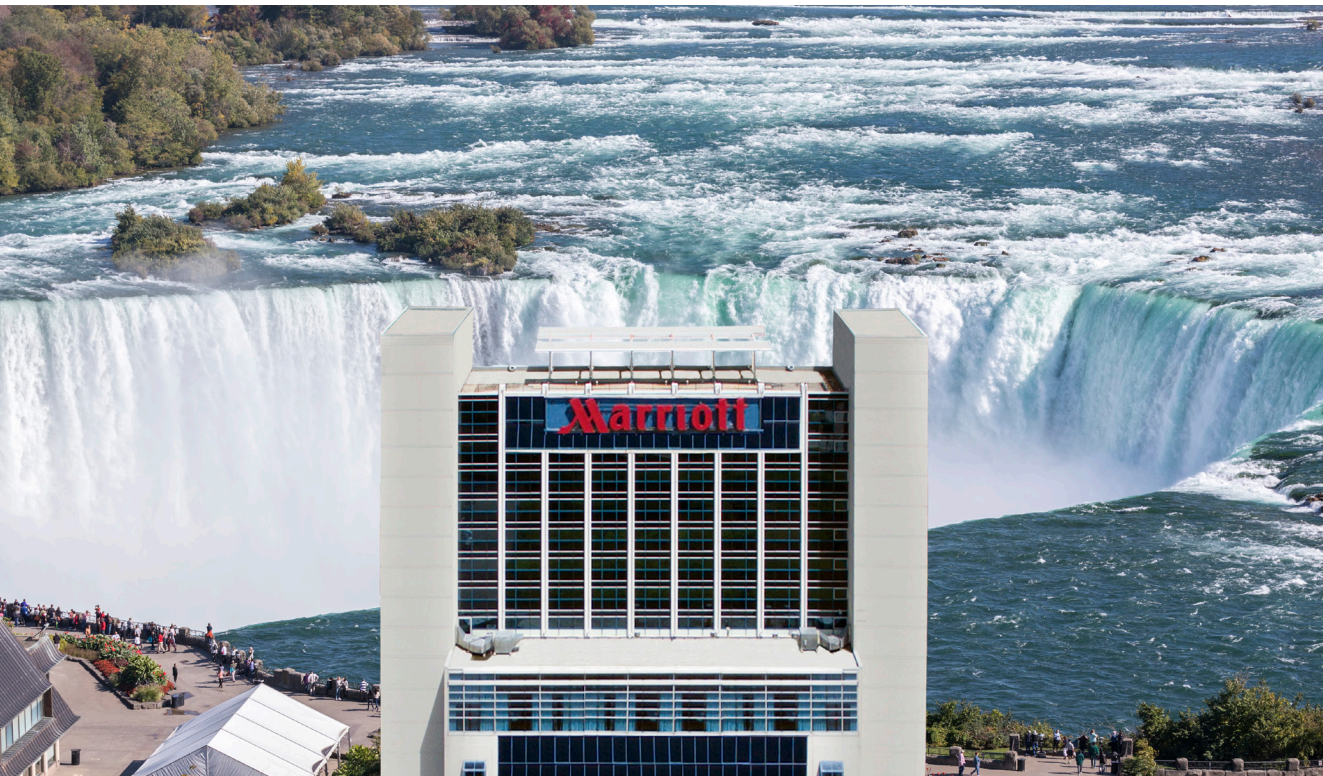
5TH LEVEL



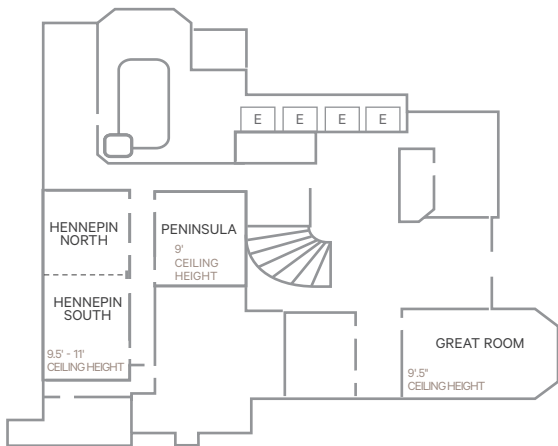
ROOM	DIMENSIONS (W X D X H)	THEATRE	CLASSROOM	SQUARE	RECEPTION	BANQUET (Rounds of 12)	BOOTH (8X8)	BOOTH (10X10)
Great Room ABC	165 x 86 x 18 = 14190 ft ²	2200	1200	-	1800	1440	110	86
Great Room A	55 x 86 x 18 = 4730 ft ²	600	350	70	550	480	38	30
Great Room B	55 x 86 x 18 = 4730 ft ²	600	350	70	550	480	38	30
Great Room C	55 x 86 x 18 = 4730 ft ²	600	350	70	550	480	38	30
Stage	23 x 33 = 759 ft ²	-	-	-	-	-	-	-
Great Room Prefunction	28 x 180 = 5042 ft ²	-	-	-	500	-	21	15
Fallsvie Studio ABC	95 x 27 x 13 = 2565 ft ²	150	108	-	200	168	-	-
Fallsvie Studio A	34 x 26 x 13 = 884 ft ²	60	36	22	80	60	-	-
Fallsvie Studio B	27 x 27 x 13 = 729 ft ²	32	18	14	60	36	-	-
Fallsvie Studio C	34 x 26 x 13 = 884 ft ²	60	36	22	80	60	-	-
Studio D	15.5 x 10 = 155 ft ²	Office/Storage Only						
Studio Room Prefunction	28 x 40 = 1120 ft ²	-	-	-	128	-	-	-

ROOM	DIMENSIONS (W X D X H)	THEATRE	CLASSROOM	SQUARE	U-SHAPE	RECEPTION	BANQUET (Rounds of 12)
Strategy Room 1	30 x 51 x 9.5 = 1530 ft ²	140	90	40	32	160	108
Strategy Room 2	38 x 51 x 9.5 = 1938 ft ²	170	120	50	38	190	144
Strategy Room 3	38 x 51 x 9.5 = 1938 ft ²	170	120	50	38	190	144
Strategy Room 5	40 x 44 x 11 = 1760 ft ²	80	60	30	27	80	84
Strategy Room 7	30 x 37 x 11 = 1110 ft ²	65	50	24	20	65	72
Strategy Pre-Function	20 x 105 = 2100 ft ²	-	-	-	-	250	-
Upper Fallsview Studio A	33 x 25 x 11 = 825 ft ²	55	36	18	14	60	48
Upper Fallsview Studio B	35 x 25 x 11 = 875 ft ²	60	40	22	18	70	60
Prefunction Space	28 x 40 = 1120 ft ²	-	-	-	-	300	-
Executive Boardroom	24 x 27 x 12 = 648 ft ²	Boardroom Only (16 People)					
Chef's Table <small>Located on the Fallsview Dining Level</small>	26 x 25 x 9 = 650 ft ²	-	14	-	-	40	32

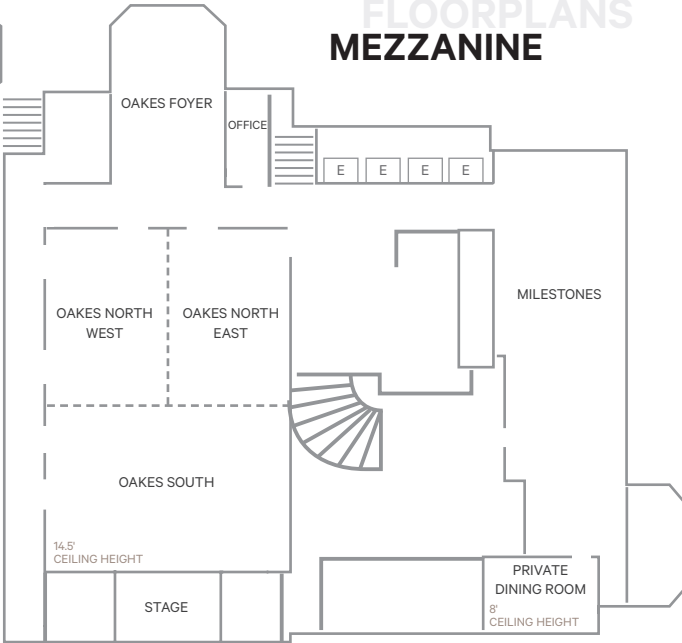
FIRST CLASS
FALLSVIEW HOTELS



FLOORPLANS
LOBBY LEVEL

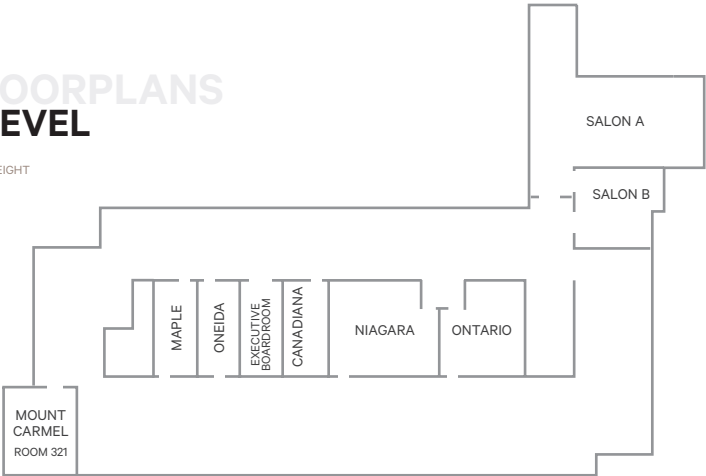


FLOORPLANS
MEZZANINE



FLOORPLANS
3RD LEVEL

8' - CEILING HEIGHT



The Marriott on the Falls is located in the heart of the Fallsview District and situated at the brink of the majestic Niagara Falls.

It is the closest hotel to the 200,000 sq. ft. Niagara Falls Convention Centre and is within walking distance to all of the area's attractions. Featuring remarkable Fallsview accommodations and dining. The Marriott on the Falls provides a convenient and luxurious experience in a spectacular world-class destination.

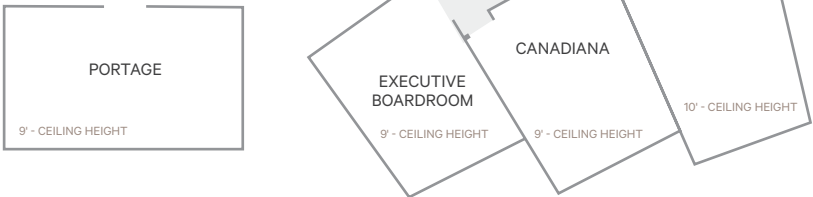
- The only hotel located directly across from the Niagara Falls Convention Centre
- 8,500 sq. ft. Oakes Ballroom with built-in stage and green room
- 404 guestrooms and suites
- 18 separate flexible function rooms
- 23,000 sq. ft. function space
- Milestones restaurant

ROOM	DIMENSIONS (W X D X H)	THEATRE	CLASSROOM	SQUARE	U-SHAPE	RECEPTION	BANQUET (Rounds of 12)	BOOTH (8X8)	BOOTH (10X10)
Oakes Ballroom	110 x 77 x 14.5 = 8470 ft ²	1000	480	-	-	808	648	51	40
Oakes North	77 x 60 x 14.5 = 4620 ft ²	500	240	-	-	558	360	25	20
Oakes North West	36 x 60 x 14.5 = 2160 ft ²	180	120	54	51	175	156	13	8
Oakes North East	36 x 60 x 14.5 = 2160 ft ²	180	120	54	51	175	156	13	8
Oakes South	50 x 77 x 14.5 = 3850 ft ²	350	200	-	-	350	288	22	20
Stage	21 x 33 x 12 = 693 ft ²	-	-	-	-	-	-	-	-
Oakes Foyer	71 x 32 x 11 = 2272 ft ²	180	96	60	-	164	156	12	10
Hennepin Ballroom	85 x 33 x 9.5 = 2805 ft ²	250	144	96	81	280	216	17	13
Hennepin North	33 x 33 x 11 = 1089 ft ²	80	48	40	33	100	96	5	4
Hennepin South	52 x 33 x 9.5 = 1716 ft ²	120	96	56	48	180	132	8	8
Peninsula	33 x 42 x 9 = 1386 ft ²	130	72	48	36	150	84	7	5
Private Dining Room	28 x 14 x 8 = 392 ft ²	-	-	25	-	35	24	-	-
Salon A	34 x 55 x 8 = 1870 ft ²	150	96	60	51	140	144	13	10
Salon B	17 x 28 x 8 = 476 ft ²	40	30	28	18	40	36	4	3
Ontario	18 x 32 x 8 = 576 ft ²	30	24	28	24	50	36	4	3
Niagara	32 x 24 x 8 = 768 ft ²	60	45	36	27	60	48	4	4
Canadiana	32 x 10 x 8 = 320 ft ²	25	12	-	-	30	-	-	-
Executive Boardroom	32 x 14 x 8 = 448 ft ²	Boardroom Only (12 people)							
Oneida	32 x 10 x 8 = 320 ft ²	30	15	-	-	30	-	-	-
Maple	11 x 32 x 8 = 352 ft ²	30	15	-	-	30	-	-	-
Mount Carmel (Room 321)	27 x 15 x 8 = 405 ft ²	20	12	-	-	20	-	-	-
Great Room	86 x 36 x 9.5 = 3096 ft ²	-	-	-	-	194	-	-	-

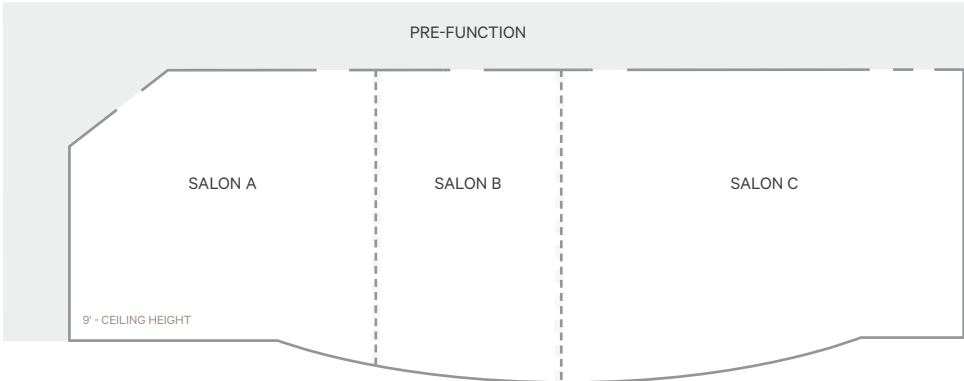
FIRST CLASS
FALLSVIEW HOTELS



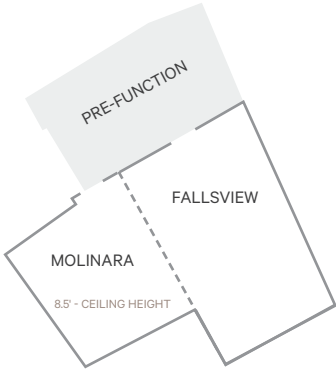
FLOORPLANS
LOBBY LEVEL



FLOORPLANS
MEZZANINE NORTH



FLOORPLANS
MEZZANINE SOUTH



The Marriott Fallsview Hotel & Spa has the enviable distinction of being the closest hotel to the brink of the world-famous Niagara Falls.

This premiere AAA Four Diamond luxury property is located steps away from the state-of-the-art Niagara Falls Convention Centre and Fallsview Casino. With amazing Fallsview guestrooms and event spaces, exceptional dining including Morton's Grille, the Marriott Fallsview offers a superior hotel experience in the heart of Niagara Falls.

- The closest hotel to the brink of Niagara Falls
- 432 guestrooms and suites all overlooking Niagara Falls
- 6,000 sq. ft. Fallsview function space
- 2,400 sq. ft. Fallsview function room with floor to ceiling windows overlooking the Falls
- 9 separate function rooms, featuring floor to ceiling window views of Niagara Falls
- Burning Springs Spa & Thermal Pools
- Morton's Grille



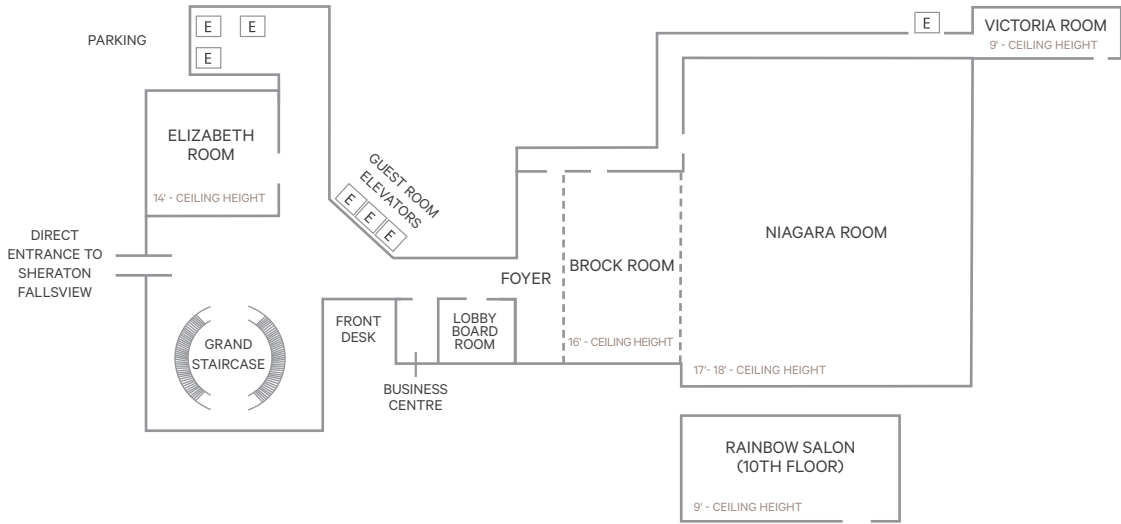
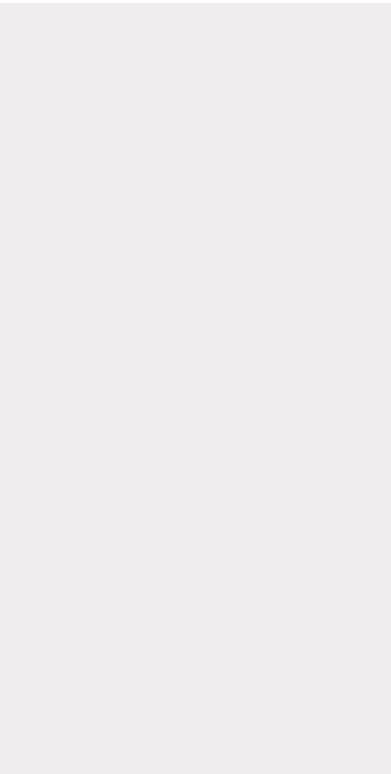
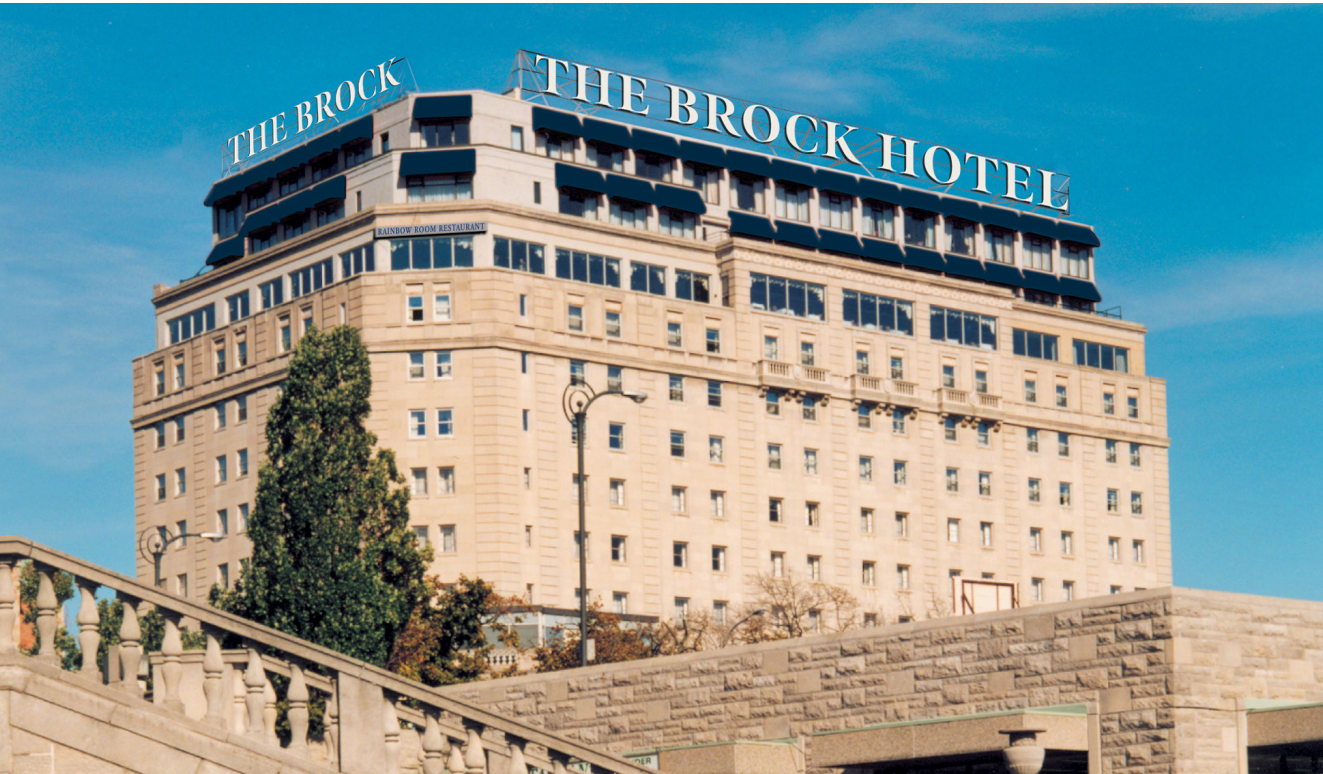
ROOM	DIMENSIONS (W X D X H)	THEATRE	CLASSROOM	SQUARE	U-SHAPE	RECEPTION	BANQUET	BOOTH	BOOTH
							(Rounds of 10)	(8X8)	(10X10)
Salon ABC	25 x 127 x 9 = 2416 ft ²	200	144	112	-	318	190	19	11
Salon AB	25 x 67 x 9 = 1462 ft ²	112	72	62	-	150	110	12	6
Salon BC	25 x 80 x 9 = 1656 ft ²	150	108	84	-	220	130	8	8
Salon A	19 x 40 x 9 = 760 ft ²	63	48	36	-	100	60	6	3
Salon B	26 x 27 x 9 = 702 ft ²	49	40	26	-	49	50	4	3
Salon C	18 x 53 x 9 = 954 ft ²	120	60	56	-	140	80	8	5
Foyer	34 x 58 x 8 = 1972 ft ²	-	-	-	-	50	-	-	-
Molinara / Fallsvier	40 x 41 x 8.5 = 1336 ft ²	120	54	-	-	130	100	-	-
Molinara	24 x 19 x 8.5 = 456 ft ²	42	30	30	15	40	40	-	-
Fallsvier	40 x 22 x 8.5 = 880 ft ²	80	48	42	30	80	60	-	-
Executive	23 x 19 x 9 = 437 ft ²	Boardroom Only (14 People)							
Canadiana	29 x 20 x 9 = 580 ft ²	56	40	30	27	60	40	-	-
Niagara	34 x 18 x 10 = 612 ft ²	64	40	30	30	70	50	-	-
Portage	23 x 19 x 9 = 437 ft ²	Boardroom Only (12 People)							

FIRST CLASS
FALLSVIEW HOTELS

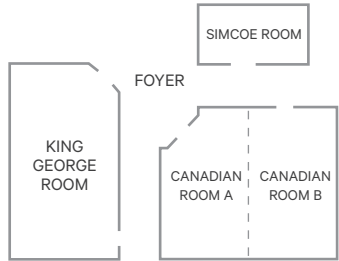
THE
BROCK
NIAGARA FALLS • FALLSVIEW
TAPESTRY
COLLECTION
by Hilton™

FLOORPLANS
UL LEVEL

THE
BROCK
NIAGARA FALLS • FALLSVIEW
TAPESTRY
COLLECTION
by Hilton™



FLOORPLANS
5TH FLOOR



There’s no better place to appreciate Niagara Falls’ incredibly rich heritage than the historic Brock Niagara Falls-Fallsview, Tapestry Collection by Hilton.

Located across the street from Niagara Falls, The Brock blends timeless design, contemporary comfort, and breathtaking views. This elegant boutique hotel is a world-class venue for conferences, meetings, and professional events. Meeting planners and coordinators will enjoy unparalleled access to the city’s best entertainment, dining, and shopping with indoor access to a diverse selection of unique special event and team building venues, Fallsview dining, themed restaurants and lively attractions.

- ▶ Historical property, located across from the Falls and Rainbow Bridge
- ▶ 237 guestrooms and suites
- ▶ 15,000 sq. ft. flexible function space including Fallsview and natural lighting
- ▶ 8,000 sq. ft. Grand Ballroom
- ▶ 11 flexible function room including Fallsview space
- ▶ Prime Steakhouse

NIAGARAMEETINGS.COM

ROOM	DIMENSIONS (W X D X H)	THEATRE	CLASSROOM	SQUARE	U-SHAPE	RECEPTION	BANQUET	BOOTH	BOOTH
							(Rounds of 10)	(8X8)	(10X10)
Grand Ballroom*	7578 sq.ft.	850	504	-	-	830	650	65	42
Niagara Room	72 x 79 x 18 = 5688 ft ²	700	400	-	-	650	520	51	32
Brock Room	42 x 45 x 16 = 1890 ft ²	150	104	50	40	180	110	14	10
Foyer	23 x 45 x 16 = 1035 ft ²	-	-	-	-	-	-	-	-
Rainbow Salon	44 x 42 x 9 = 1848 ft ²	120	77	40	32	160	120	-	-
Elizabeth Room	44 x 34 x 14 = 1496 ft ²	130	68	30	24	120	110	-	-
Canadian Room AB	42 x 32 x 9 = 1344 ft ²	120	80	40	30	130	100	-	-
Canadian Room A	21 x 32 x 9 = 672 ft ²	60	40	26	20	60	40	-	-
Canadian Room B	21 x 32 x 9 = 672 ft ²	60	44	30	20	70	40	-	-
King George Room	22 x 42 x 9 = 924 ft ²	70	48	30	20	90	60	-	-
Victoria Room	39 x 15 x 9 = 585 ft ²	65	32	24	18	60	40	-	-
Lobby Boardroom	24 x 16 x 8 = 384 ft ²	Boardroom Only (12 People)							
Simcoe Room	23 x 11 x 9 = 253 ft ²	Boardroom Only (12 People)							
5th Floor Pre-Function	900 ft ²	-	-	-	-	80	-	-	-

*The Grand Ballroom is a combination of the Brock Room and the Niagara Room.

NIAGARAMEETINGS.COM

VENUES EVENT



You're spoiled for choice with Canadian Niagara Hotels centrally located event destination.

Your group is steps from a diverse selection of restaurants, unique special event venues and attractions.

Want to take your meeting experience to the next level? Go ahead and book an entire venue for your own exclusive event. Your guests will take their memories home when you order personalized, one-of-a-kind delegate and VIP gifts through our amazing on-site vendor partners.

Your perfectly executed event. Our amazing space. Just imagine it, and we'll make it happen.

- ▶ Niagara Brewing Company
- ▶ Niagara Distillery & BBQ
- ▶ Fallsview Rooftop Pool & Bar
- ▶ Hard Rock Club
- ▶ Hard Rock Cafe
- ▶ Rainforest Cafe

NIAGARA BREWING COMPANY

WE CAN "BREW" JUST ABOUT ANYTHING!

The Niagara Brewing Company has an expansive, loft-like 3,000 sq. ft. space that may be set up in almost any arrangement with a capacity up to 210 people. We can create unique experiences in a hip and trendy atmosphere beginning with intimate tours to indulging in our beer focused creations.



From customized dinner events to mix and mingle receptions, we can "brew" just about anything.

EVENTS

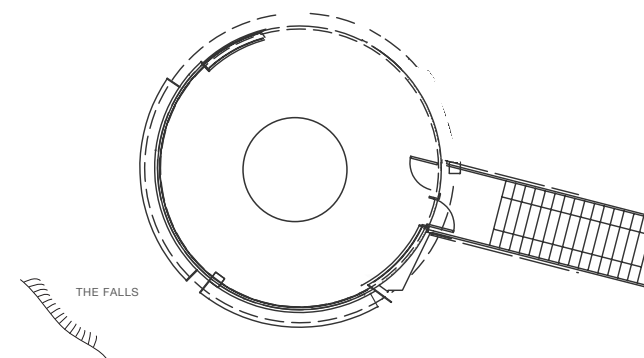
Hold a private event at the brewery.

Niagara Brewing Company features 3,000 sq. ft. of space including a Fallsview patio to host special events and an on-site beer and retail store where guests can shop for exclusive Niagara Brewing Company merchandise and craft beer. The brewery also offers a delicious locally inspired food menu, tastings of signature brews, food stations and specialty gifts for special groups and events.

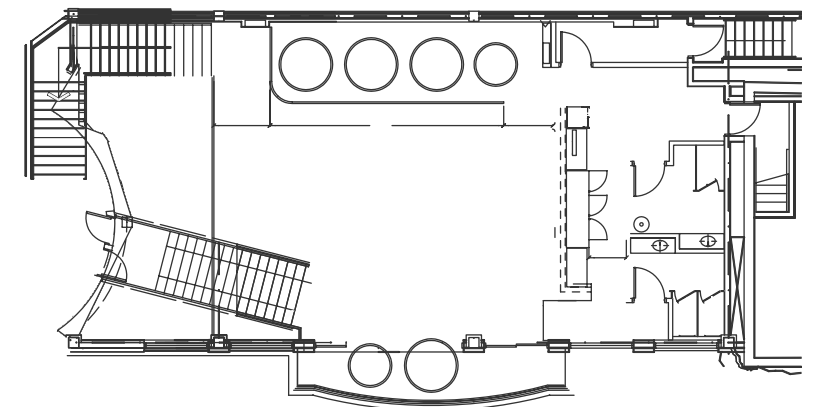
NIAGARA BREWING COMPANY



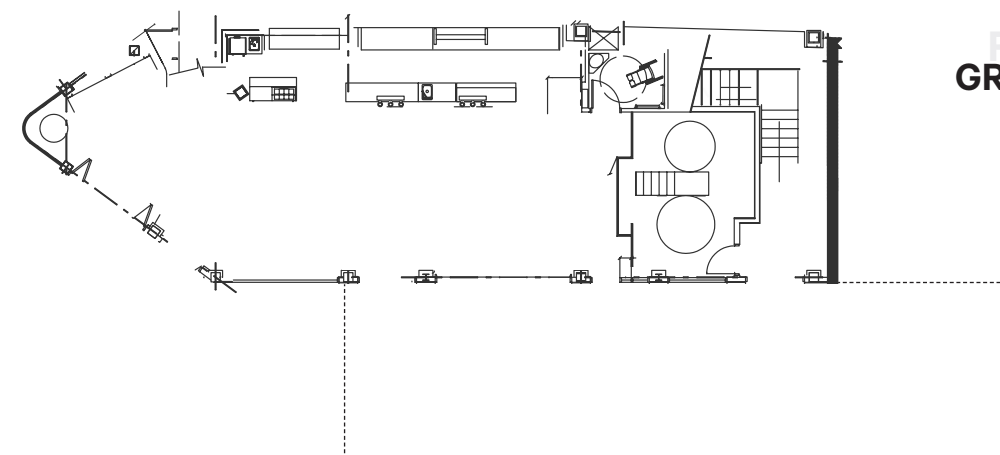
FLOORPLANS ROOFTOP FALLSVIEW



FLOORPLANS 2ND FLOOR



FLOORPLANS GROUND FLOOR / PATIO



LOCATION	SQ.FT.	BANQUET	RECEPTION
TOTAL	3423	195 PEOPLE	280 PEOPLE
GROUND PATIO	1500	80 PEOPLE	100 PEOPLE
GROUND FLOOR	683	40 PEOPLE	65 PEOPLE
2ND FLOOR	788	50 PEOPLE	75 PEOPLE
ROOFTOP PATIO	452	25 PEOPLE	40 PEOPLE



NIAGARA DISTILLERY & BILLY BONES BBQ

Niagara Distillery adds a touch of craft to your event in an inviting and stylish setting.

The spacious 4,800 sq. ft. open floor plan, is designed to accommodate a variety of arrangements personalized to fit your event.

The Distillery offers an extraordinary experience with hand crafted spirits and cocktails, enhanced by award winning BBQ from competition favourite Billy Bones BBQ. The menu is packed with tender brisket, pulled pork, juicy burgers, and the signature item is low and slow cooked pork ribs caramelized in classic Billy Bones sauce.

Niagara Distillery is situated at the corner of Falls Avenue and Clifton Hill, steps from Niagara Falls. The Distillery is an ideal venue for special events, meetings and gatherings in a comfortable yet sleek atmosphere, and features two levels of floor space with outdoor patios.



Events

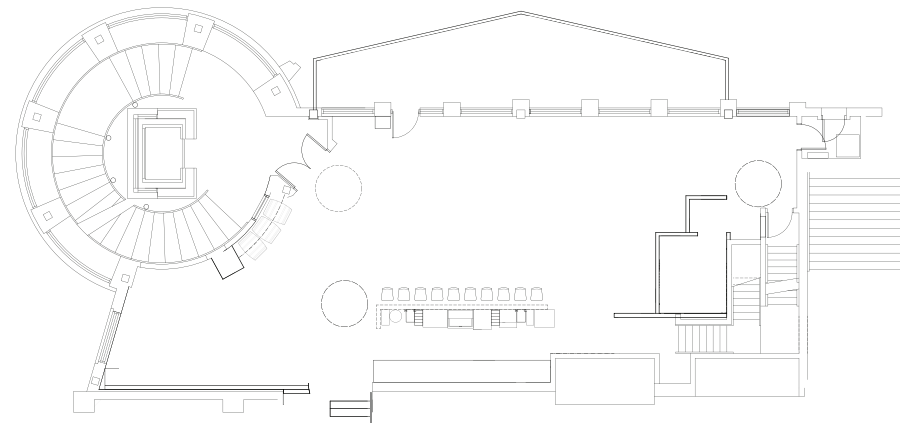
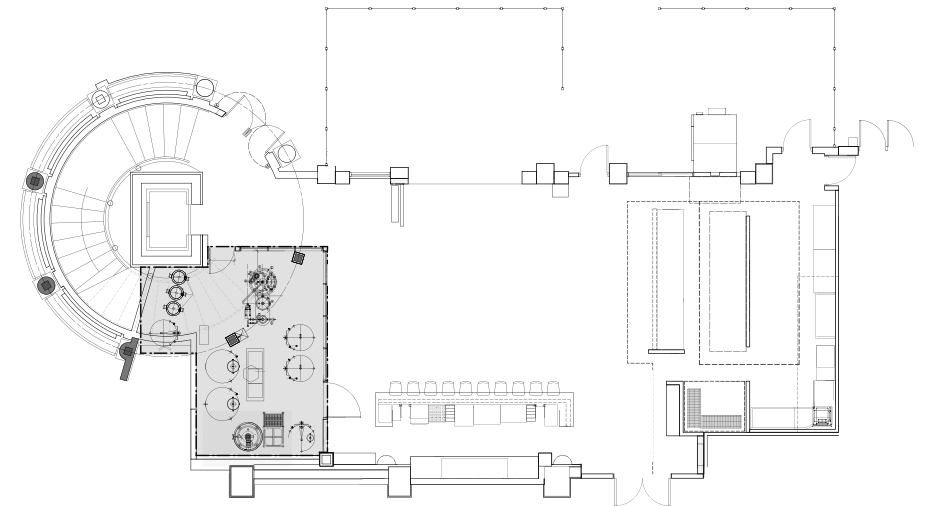
Niagara Distillery is a one-of-a-kind venue in a one-of-a-kind location, making it an extraordinary choice for private functions. Speak with our team to learn more about customized menus and a signature cocktail to elevate your event. Our venue can be easily transformed to meet the needs of your group. Our open floor plan is a blank slate ready for your inspiration.

Always a winner for a spirited dinner!

An event at Niagara Distillery is sure to raise spirits! The combination of deeply smoked and deliciously caramelized Billy Bones BBQ, and our six hand-crafted signature spirits will thrill the crowd. Each of our spirits was created to be enjoyed on their own, or when blended into your favourite cocktails, the flavours encourage you to experiment.

FLOORPLANS GROUND FLOOR / PATIO

FLOORPLANS 2ND FLOOR / PATIO



LOCATION	SQ.FT.	BANQUET	RECEPTION
TOTAL	4,804	270 PEOPLE	400 PEOPLE
MAIN FLOOR TOTAL	2,295	130 PEOPLE	200 PEOPLE
MAIN FLOOR REST & BAR	1,413	60 PEOPLE	100 PEOPLE
MAIN FLOOR PATIO	882	70 PEOPLE	100 PEOPLE
SECOND FLOOR TOTAL	2,509	140 PEOPLE	200 PEOPLE
SECOND FLOOR REST & BAR	2,084	104 PEOPLE	150 PEOPLE
SECOND FLOOR PATIO	425	36 PEOPLE	50 PEOPLE



FALLSVIEW ROOFTOP POOL & BAR

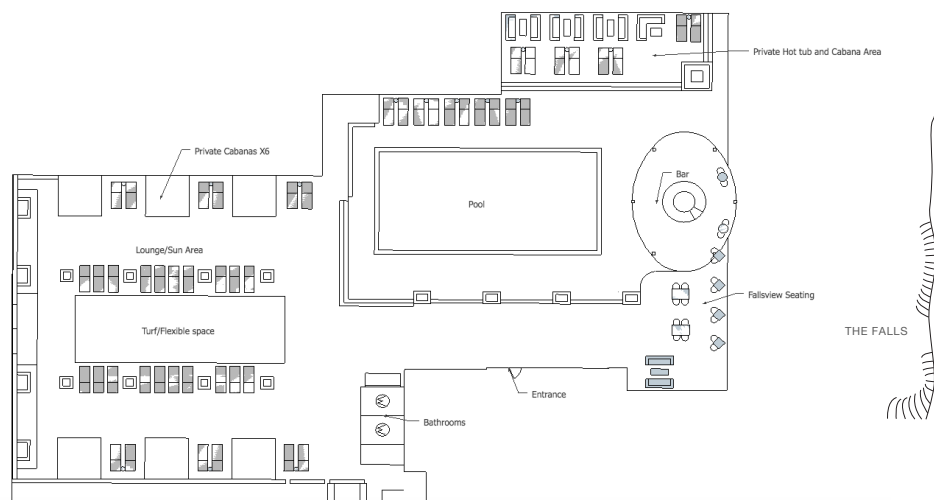
The only outdoor pool in Niagara to feature breathtaking views of Niagara Falls.

This unique outdoor experience provides a flexible and customizable space for signature events, remarkable weddings or stunning receptions. Enjoy nightly summer fireworks

from the Fallsview Terrace, a beach-club vibe with our VIP Cabanas on the Pool Deck or entertain on the Garden Terrace with Chef stations and patio lanterns.



LOCATION	SQ.FT.	BANQUET	RECEPTION
TOTAL	10,335	550 PEOPLE	1,400 PEOPLE
GARDEN TERRACE	3,900	240 PEOPLE	600 PEOPLE
CITYVIEW TERRACE	3,135	250 PEOPLE	400 PEOPLE
POOL TERRACE	3,300	60 PEOPLE	400 PEOPLE
- FALLSVIEW TERRACE	500	-	50 PEOPLE



HARD ROCK CLUB

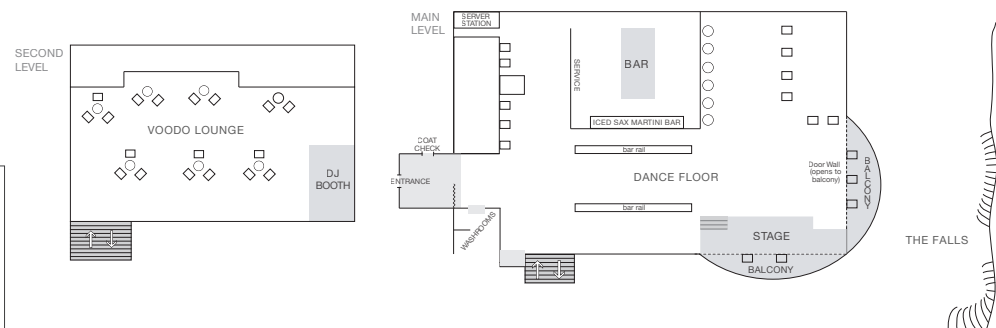
Feel the raw energy of the Hard Rock Club, home to an impressive 18,000 watt sound system, as well as the world's largest electronic disco ball outfitted with LCD screens and graphic panels.

Open the garage doors to a fallsview balcony wrapping around the dance floor and stage providing an inspiring backdrop to presentations, events and live entertainment. The electric atmosphere provides an opportunity for delegates to build and strengthen relationships in a relaxed setting.

Create a unique team building activity by putting them behind the bar with our skilled Mixologists. After enjoying the Club, indoor walkways will take you back to the Sheraton Fallsview and The Brock Hotel where you can safely ride the elevator back to your room.



LOCATION	SQ.FT.	BANQUET	RECEPTION
TOTAL	1,900	100 PEOPLE	270 PEOPLE
MAIN LEVEL	700	70 PEOPLE	190 PEOPLE
VOODOO LOUNGE	600	30 PEOPLE	40 PEOPLE
PATIO	600	-	40 PEOPLE

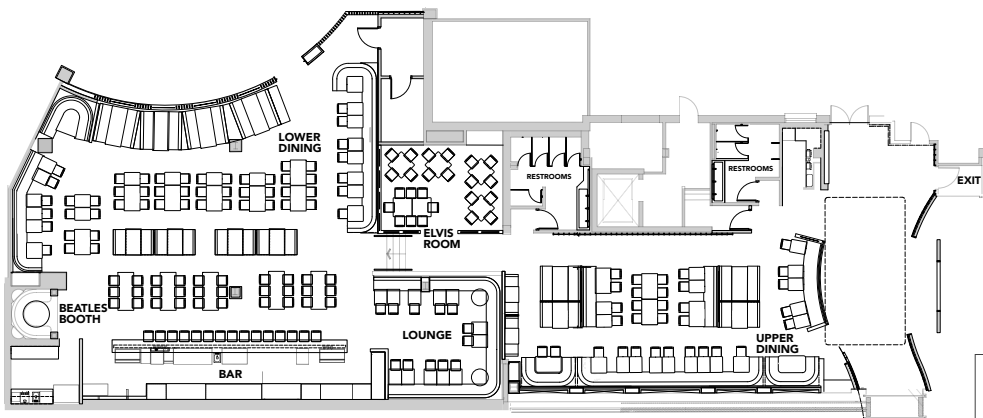


HARD ROCK CAFE

Give new meaning to the term "business casual" when you host an event at the Hard Rock Cafe.

With indoor walkways to the Sheraton Fallsview and The Brock Hotel, it's easy to tap into your inner rock star. The atmosphere includes authentic casual fare, great music,

exclusive rock memorabilia and themed rooms dedicated to Elvis and the Beatles. Personalized merchandise is available through the Rock Shop.



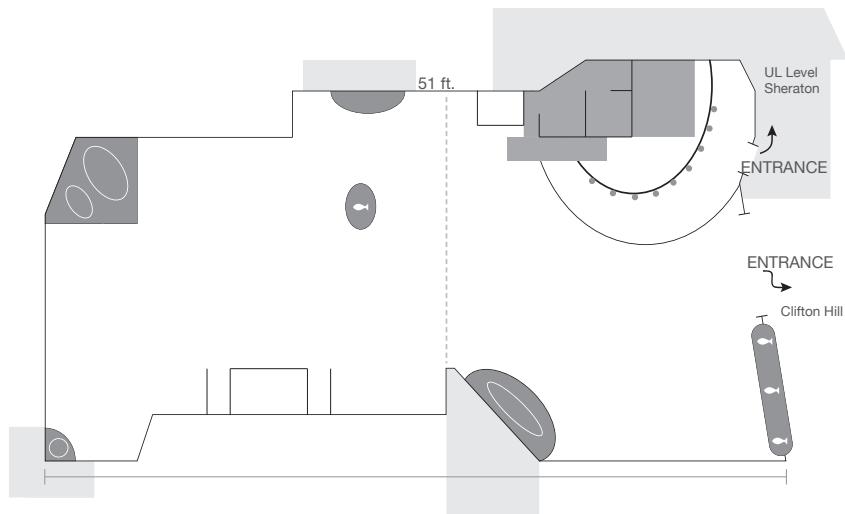
LOCATION	SQ.FT.	BANQUET	RECEPTION
TOTAL	3,800	283 PEOPLE	320 PEOPLE
UPPER LEVEL	1,600	82 PEOPLE	130 PEOPLE
LOWER LEVEL	1,500	141 PEOPLE	130 PEOPLE
BAR	700	36 PEOPLE	36 PEOPLE
ELVIS ROOM	245	24 PEOPLE	24 PEOPLE

RAINFOREST CAFE

Kick-off your adventure at the Rainforest Cafe where your delegates will enjoy casual dining in a rainforest setting that features live sharks, colourful tropical fish, animatronic animals, realistic thundershowers and more!

Escape into a tropical adventure that's perfect for themed events and team building exercises. The Rainforest Cafe, interconnected to the Sheraton Fallsview

and The Brock Hotel will handle every detail from special menu options to entertainment, decor and gifts.



LOCATION	SQ.FT.	BANQUET	RECEPTION
TOTAL	7,000	430 PEOPLE	470 PEOPLE
RESTAURANT	6,400	430 PEOPLE	430 PEOPLE
BAR	600	-	40 PEOPLE

INSPIRED MENUS
CELEBRITY CHEF



MASSIMO CAPRA

Celebrated chef, restaurateur, author and television personality, Chef Massimo Capra has earned the admiration of the culinary world with his engaging personality and epicurean flair.

Chef Capra's dedication to incorporating only the freshest local ingredients reflects his early training in the kitchens of Italy's finest hotels and restaurants. Imagine impressing your delegates with tailored menus created specifically for your group by Massimo Capra.

One of Canada's most recognizable Chefs, Massimo can be available to make special appearances at your event.



PRIME STEAKHOUSE
NIAGARA FALLS



Prime is a contemporary steakhouse with a classic Fallsview flair.

Located inside the The Brock Niagara Falls – Fallsview, Prime is a contemporary steakhouse with classic Fallsview flair. Featuring premium steaks, exceptional service, and the most stunning views of Niagara Falls, Prime offers a modern steakhouse experience like it's never been done before.

An inspired menu of prime steaks, fresh seafood, and other classic favourites is what makes Prime a standout on the Niagara Falls dining scene. Prime offers memorable Fallsview dining that's perfectly suited to your taste.

LOCATION	SQ.FT.	BANQUET	RECEPTION
TOTAL	2,500	225 PEOPLE	350 PEOPLE

MASSIMO'S ITALIAN
FALLSVIEW RESTAURANT



FALLSVIEW
GRAND BUFFET



Massimo's Italian Fallsview Restaurant blends old world tradition with new world style in the direct view of Niagara Falls.

Located on the dining level of the Sheraton Fallsview hotel, Massimo's Italian Fallsview Restaurant offers classic Italian cuisine, an extensive wine list, and high-quality, often locally-sourced ingredients that reflect Chef Massimo Capra's distinctive connection to both Italy and Niagara.

At Massimo's Italian Fallsview Restaurant diners will experience a true taste of Italy and the very finest of Niagara Falls, all within direct view of one of one of the world's most beautiful natural wonders.

LOCATION	SQ.FT.	BANQUET	RECEPTION
TOTAL	3,050	80 PEOPLE	110 PEOPLE

Stunning views, superb cuisine and attentive service offered at the Fallsview Grand Buffet.

Groups enjoy unparalleled fresh buffet choices, as well as live action food stations, as a complement to breakfast, lunch and dinner meetings and celebratory special events.

This go-to dining destination is available for the exclusive use of private group functions.

LOCATION	SQ.FT.	BANQUET	RECEPTION
TOTAL	9,400	285 PEOPLE	452 PEOPLE



MORTON'S GRILLE



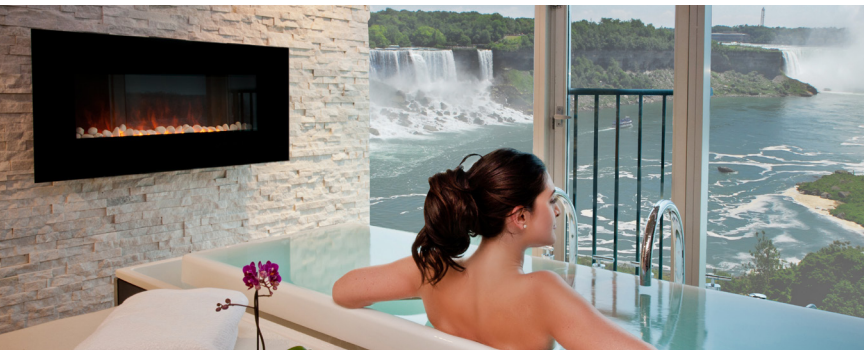
Stylish enough for the in-crowd,
yet casual enough for the unassuming.

With an atmosphere of relaxed refinement, a classic menu and an incredible view of the Falls, Morton's Grille offers a casual place to enjoy fresh seafood, succulent steaks, burgers, salads and more.

The bar at Morton's Grille features a unique collection of hand-crafted cocktails and an

impressive selection of wines including regional and imported red and white wines to suit any occasion.

LOCATION	SQ.FT.	BANQUET	RECEPTION
TOTAL	4,500	225 PEOPLE	225 PEOPLE



CHRISTIENNE FALLSVIEW SPA

Treat your delegates to luxurious spa treatments at the Christienne Fallsview Spa, which features a Relaxation Lounge directly overlooking both the Canadian and American Falls.

Relax and refresh in an exclusive hydrotherapy infinity tub while enjoying aromatherapy scents, custom blended teas or a specialty beverage.



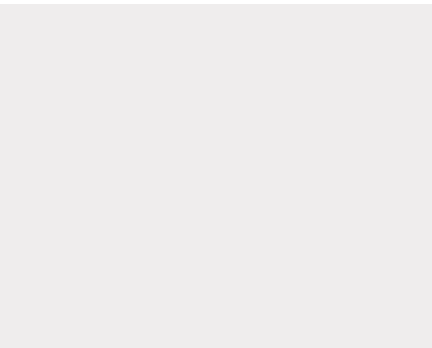
BURNING SPRINGS SPA & THERMAL POOLS

Immerse yourself in our world of tranquility at Burning Springs Spa & Thermal Pools, located in the Marriott Fallsview Hotel and Spa. Relax your body, refresh your mind and revive your spirit for the ultimate in relaxation.

Our special events staff can get you everything you need customized to match your group size and event.

MILESTONES

milestones®



Inspired food, inspired views and
Fallsview dining at its best.

Make your next event a milestone at Milestones Fallsview restaurant. Delegates can enjoy award winning cuisine, Milestones' exclusive party favours and drinks, all within an open, inviting atmosphere overlooking Niagara Falls.

Our venue features seating overlooking Niagara Falls, a licensed outdoor patio and private dining room.

LOCATION	SQ.FT.	BANQUET	RECEPTION
TOTAL	2,200	280 PEOPLE	360 PEOPLE

ADVENTURE CITY

Bring the team to Adventure City, an action-packed video and arcade style game floor where everyone has the chance to shine.

Traffic Slam Bumper Cars, skee-ball and basketball toss offer hours of exciting, interactive team-building adventure.

And don't forget to reward group member efforts with fun arcade-style souvenirs and merchandise.

HERSHEY'S CHOCOLATE
WORLD NIAGARA FALLS

Let the Hershey's team host a chocolate-themed break or decadent chocolate reception created in our very own Hershey's Chocolate World. The 7,000 sq. ft. retail venue is a chocolate lover's paradise providing plenty of inspiration for unique gifts and room-drops.

Tempt your delegates with hand-dipped strawberries and pretzels, fresh-baked cookies, gourmet fudge or our signature Hershey's milkshakes. Collectibles such as glassware, tins, and candy-scented candles make unique and memorable guest souvenirs.

FALLSVIEW CASINO RESORT
& CASINO NIAGARA

Live music and entertainment await you at Fallsview Casino and Casino Niagara. Boasting an impressive 300,000 sq. ft. of gaming fun and entertainment, there is something for everyone with 4,300 slot and video poker machines, and 170 action packed tables.

Fallsview Casino Resort features the best in entertainment with the 1,500 seat theatre. Our Hotels include indoor connections to Casino Niagara and are all within walking distance to both casinos.

OF IT ALL IN THE CENTRE



Canadian Niagara Hotels is situated in the heart of the international border city of Niagara Falls, Ontario. It's easy and convenient to drive to Niagara Falls from four international airports: Toronto, Hamilton, Buffalo and Niagara Falls.

If you're driving, the city is an easy 85-minute drive from Toronto, and only 40 minutes from Buffalo. Niagara Falls is directly linked to major highways in Canada, and three international bridges that will get you to and from major routes in the United States.

AIR TRAVEL

If you are flying - we're only minutes from four International Airports:

- 20 minutes from Niagara Falls International Airport (IAG)
- 40 minutes from the Buffalo Niagara International Airport (BUF)
- 50 minutes from the Hamilton International Airport (YHM)
- 85 minutes from Toronto Pearson International Airport (YYZ)
- 15 minutes from Niagara District Airport (YCM)

GROUND

Niagara Falls is directly linked to major highways in Canada and the United States and is connected to the USA by three International Bridges.

TRAIN

VIA Rail and Amtrak provide daily service to Niagara Falls with connections throughout Ontario, Quebec and New York.

BUS

Niagara Falls bus terminal services Coach Canada, GO Transit, Greyhound Canada, Megabus, and Niagara Transit.

NEED A RIDE

Convenient airport transportation and preferred discount pricing is available for all of your transportation needs when booking with Canadian Niagara Hotels. Local transportation partners offer sedan, limousine, shuttle and coach services.



CANADIAN
NIAGARA
HOTELS

NIAGARAMEETINGS.COM

